

INSTALLATION GUIDE



SAFETY

THE SAFETY OF YOU AND OTHERS IS VERY IMPORTANT TO US!

In order to minimize this risk and make an informed decision about safety, it is important that you carefully read and follow the installation instructions we have provided.

We urge you to use your own good judgment and allow plenty of time for install.

HAZARD CHECKLIST

- Always wear personal protective equipment (PPE) such as: protective eye wear, gloves, close toed shoes, etc.
- We recommend that you use a certified mechanic or shop for professional installation.
- Always set emergency brakes on vehicle and use tire blocks to ensure vehicle stabilization.
- Use caution when lifting, we recommend the use of equipment to help lift bumpers into place.
- Use caution when using power tools such as air ratchet, etc.
- Take caution when installing wiring.
- Perform regular inspections of hardware, bolts, brackets, etc.
- Rigid light brackets are specifically designed to fit Rigid lights, we do not guarantee off brand fitment.
- Our winch mount is designed for Warn and Superwinch products. We do not guarantee off brand fitment.

USE & RISK

- **Bodyguard Products LLC is not responsible for damage to our products, or other subsequent damage that might occur, as a result of misuse or improper installation. While we do manufacture products that appear stronger than factory parts, our products should not be viewed or relied upon as life-saving devices in the event of a collision or rollover. We make no claims relating to airbag compatibility, crashworthiness, or sturdiness. It is the customer's responsibility to check with the vehicle manufacturer or auto dealer regarding airbag compatibility and automobile manufacturer's warranty before installing our products.** Use either foam or tape on fenders to prevent scratches to the truck when installing your bumper.
- Please allow approximately 3-4 hours for installation

HARDWARE KIT

19+ Jeep Gladiator Rear Bumper		
	Jeep Rear Bumper Kit	Qty.
	1/2"-13 x 1-1/2" Yellow Zinc Grade 8 Hex Bolt	4
	1/2"-13 Grade 8 Steel Serrated Flange Nut Zinc	4
	1/2" Washer, Grade 8 Zinc-Yellow	8
	7/16"-14 x 1-1/4" Yellow Zinc Grade 8 Bolt	2
	7/16"-14 Zinc Grade 8 Serrated Hex Flange Nut	2
	7/16" Yellow Zinc Grade 8 Flat Washer	4
	1/4-20 x 5/8 Long, Stainless Steel SBHCS	52
	1/4-20 Hex Grade 5 Serrated Flange Nut, Stainless Steel	36
	1/4-20 (.093-.126: Panel Range) Zinc Electroplate Spring Steel Cage Nut	16
	Plastic License Plate Nuts	4
J-HK-RXR19	#14 x 5/8" Zinc License Plate Screw	4
	5/16"-18 x 1" Zinc Grade 5 Hex Bolt	8
	5/16" Zinc Grade 5 Flat Washer	16
	5/16"-18 Zinc Grade 8 Serrated Hex Flange Nut	8
	3/8"-16 x 1" Yellow Zinc Grade 8 Hex Bolt	8
	3/8" Yellow Zinc Grade 8 Flat Washer	16
	3/8"-16 Zinc Grade 8 Serrated Hex Flange Nut	8
	M10-1.5 x 30mm Long Grade 8.8 Hex Bolt	4
	6MH8 3RXF AB-001 #10 - Sensor Bezel (Sensor Hole Plates only)	2
	6829 5601 AC #10 - Retainer Clip (Sensor Hole Plates only)	2
	6MH8 2RXF AB-001 #9 – Sensor Bezel (Sensor Hole Plates only)	2
	6829 5600 AC #9 – Retainer Clip (Sensor Hole Plates only)	2

NOTE:

If your vehicle is equipped with the factory tow bumper (not a bolt on hitch), you will need to cut and remove the factory hitch collar displayed in the image to the right.

Leaving the collar on will risk interference with you Bodyguard bumper resulting in damages to the product.

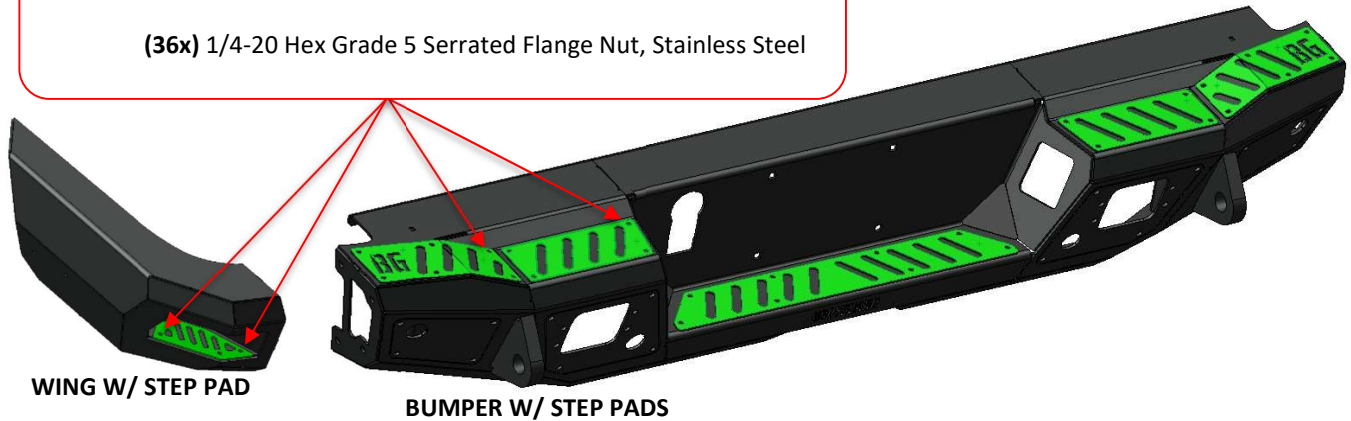


1. STEP PAD INSTALL

Mount step pads BEFORE installing bumper

(36x) 1/4-20 x 5/8 Long, Stainless Steel SBHCS

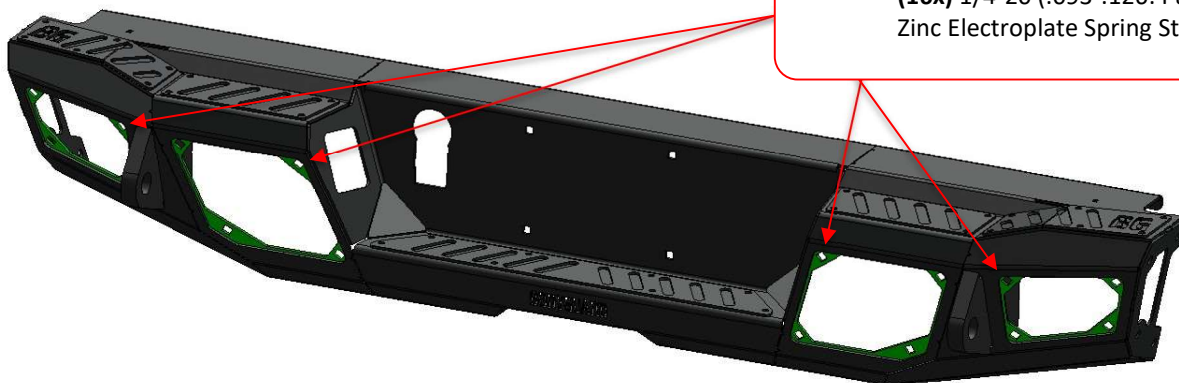
(36x) 1/4-20 Hex Grade 5 Serrated Flange Nut, Stainless Steel



2. CAGE NUT INSTALL

Install supplied cage nuts everywhere that there is a square hole. This will assist in installing all bolt on plates.

(16x) 1/4-20 (.093-.126: Panel Range)
Zinc Electroplate Spring Steel Cage Nut

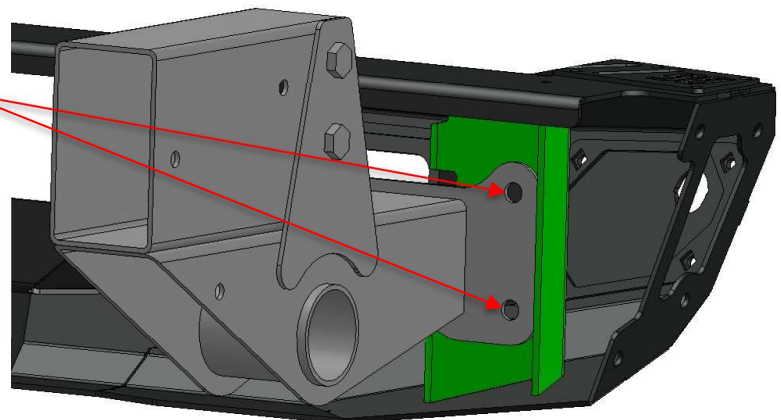


3. BUMPER INSTALL

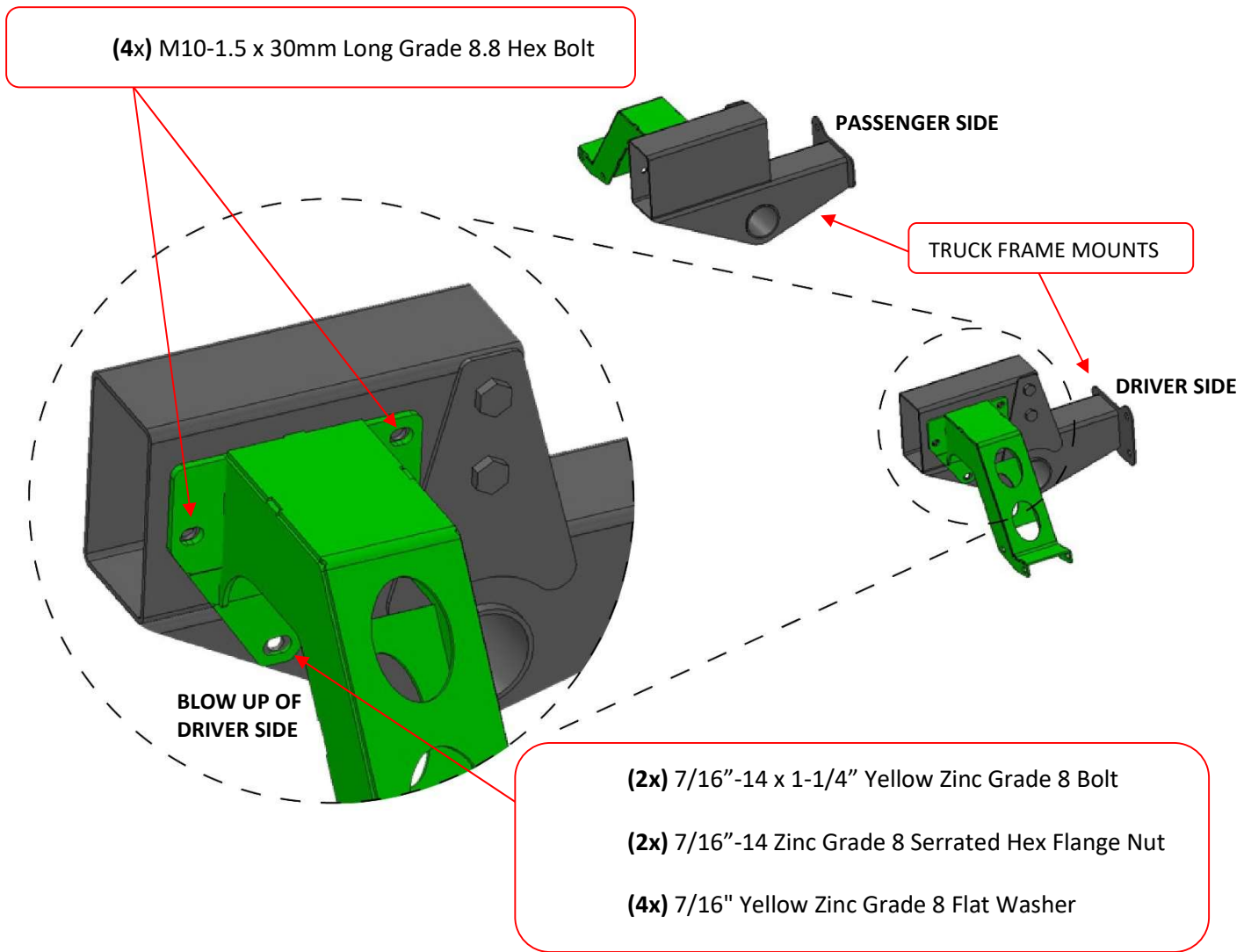
(4x) 1/2"-13 x 1-1/2" Yellow
Zinc Grade 8 Hex Bolt

(4x) 1/2"-13 Grade 8 Steel
Serrated Flange Nut Zinc

(8x) 1/2" Washer, Grade 8
Zinc-Yellow

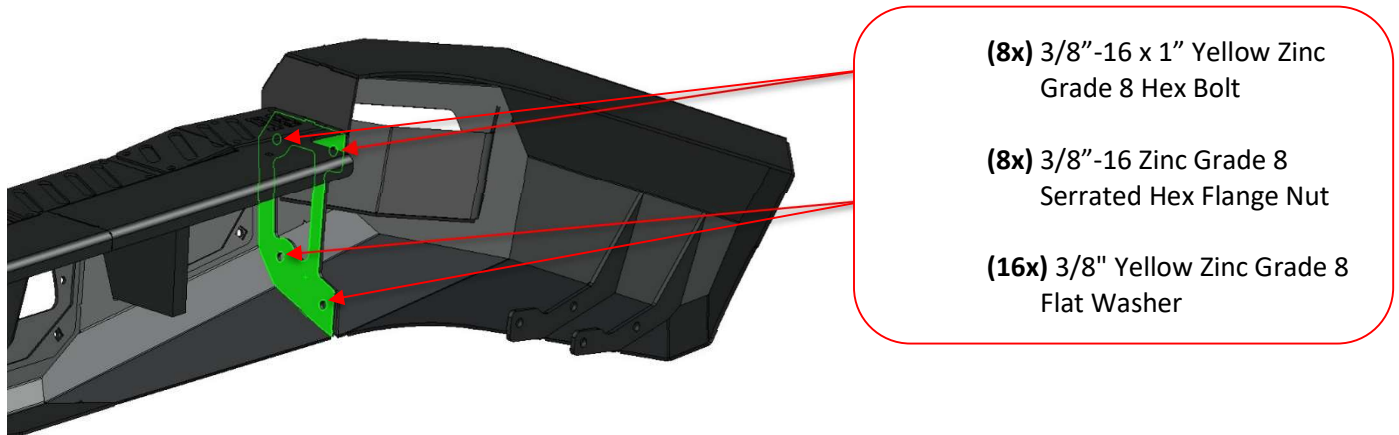


4. WING STIFFENER BRACE INSTALL

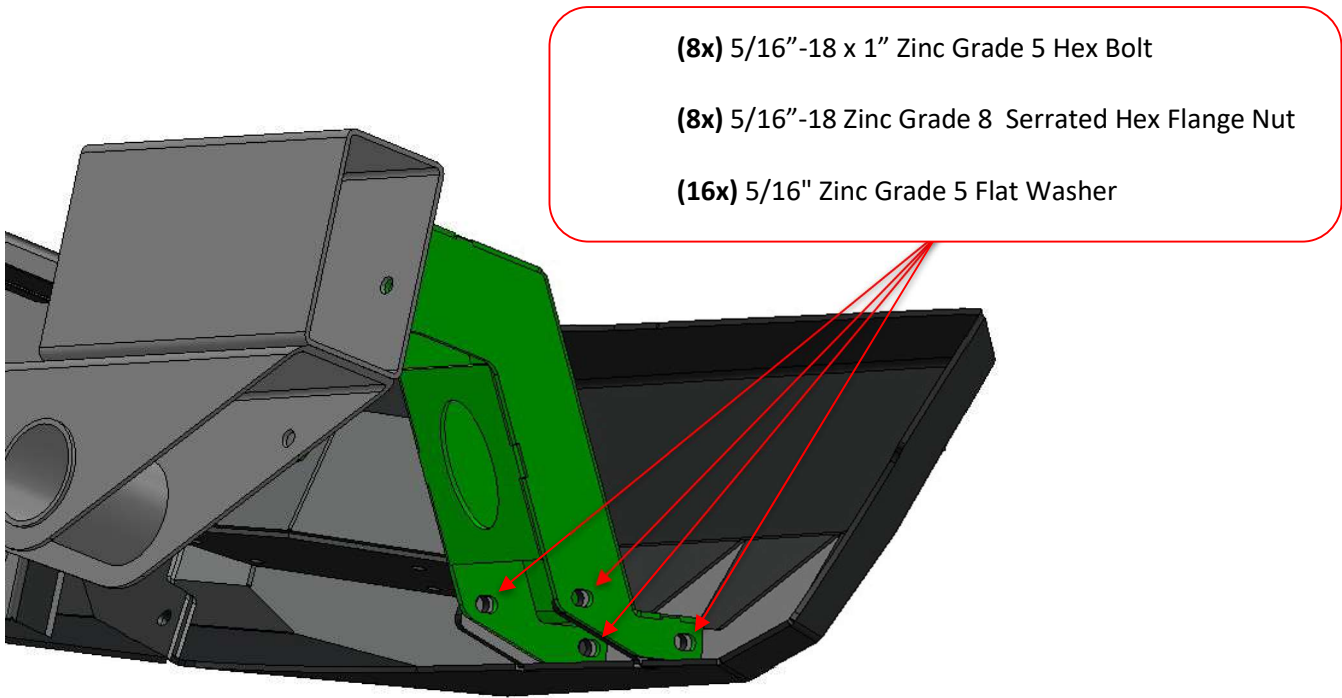


5. WING END PLATE INSTALL

****Before installing wings, put masking tape on body side panel to prevent any scratches.****



6. WING TO BRACE INSTALL



7. SENSOR BEZELS AND PLATE INSTALL

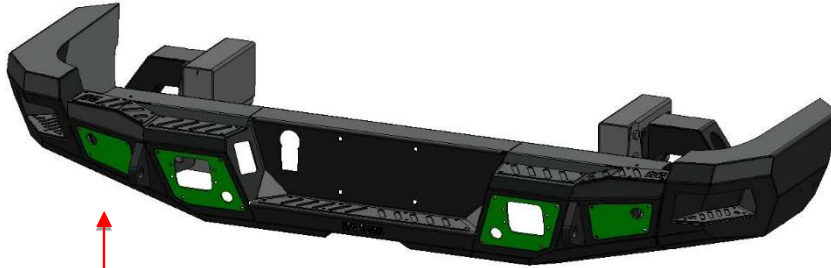
The following step is only for vehicles with factory sensors, if equipped, use the supplied sensor bezels specified below. If you do not have sensors, you can install non-sensor plates.

FRONT – SENSOR BEZEL
6MH8- 3RXF AB-001 **#9**
and
6MH8- 3RXF AB-001 **#10**



BACK – RETAINER CLIP
6829 5600 AC **#9**
And
6829 5600 AC **#10**

Number located in small print matches with front and back. Shown above in **bold text**

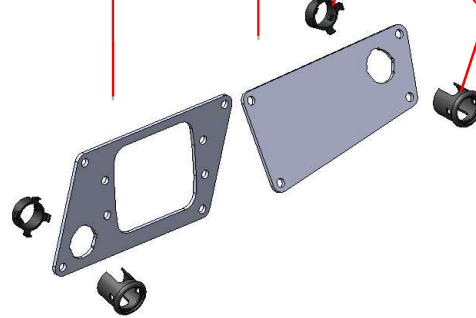
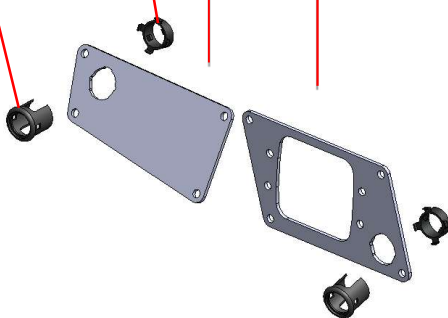


6MH8 3RXF AB-001
#10 (QTY:2)

6829 5601 AC
#10 (QTY:2)

6MH8 2RXF AB-001
#9 (QTY:2)

6829 5600 AC
#9 (QTY:2)



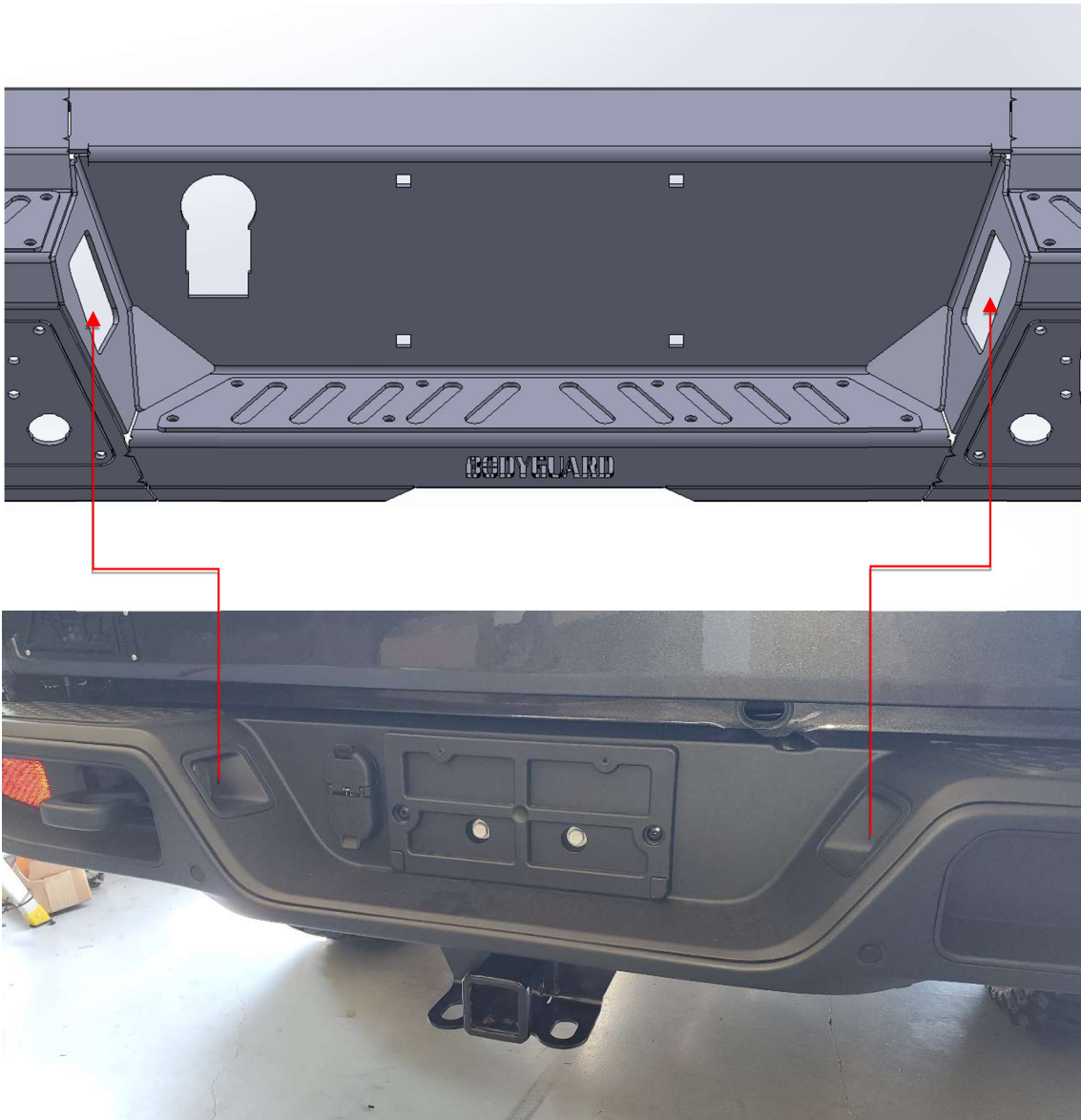
Connect sensors and install through plate onto bumper.

(16x) 1/4-20 x 5/8 Long

(16x) 1/4-20 Hex Grade 5 Serrated Flange Nut



8. FACTORY REPLACEMENT



FINISHING UP

- Install shackles.
- Confirm that all hardware is tightened and everything is secure.
- Secure wiring harnesses for lights and sensors.
- Reconnect the battery.
- Test all lighting and wiring before using vehicle (fog lights, sensors, etc.).

MAINTENANCE

- Periodically check that all hardware is tightened and that all wiring and connections are secure.
- Periodically check that all sensor plugs are secure.
- Routinely wash bumper to maintain the powder coat finish.

FEEDBACK

We'd love to hear from you!

Please send your pictures, testimonials, comments, or suggestions to us by email at info@bodyguardbumpers.com. We frequently use customer pictures for brochures and marketing materials, and we always welcome customer feedback to ensure quality improvements within our company. Thanks for your purchase; we appreciate your business very much!

Where **STRENGTH** Meets *Style!*™



@BodyguardBumpers